

# Elle's Enchanted Forest

## PLAYGROUND FOR EVERYONE.



### Who we are:

Elle's Enchanted Forest is inspired by the unconditional love Elle's sister Nikita has for her younger sister and the dream to have a place to go with her Grandpappy, a disabled Veteran.

Elle was born on May 5th, 2014. She was born with bi-vocal chord paralysis and couldn't breathe. Elle had to spend time in the NICU and at Cleveland Clinic Children's Rehab Center for 3 months. After a ton of tests and all the specialist coming back with inconclusive results, the genetic results finally came back that there was a large deletion of chromosome #4. It is De Novo, meaning it is new in the medical world. The doctors can not give us a clear picture of what to expect, they can only compare to cases of patients missing only 5-10% of what Elle is missing. They said she may never walk or talk. We also had to make the hard decision to give her a tracheostomy and g-tube. We both strongly believe that Elle is going to prove all the doctors wrong. We are trying to give Elle the best chances and support we can. She is a busy girl working with multiple pediatric therapists and playing with her big sister, Nikita. We want to see our girls play together without limits and believe all children and families should have this same opportunity.

- \* EIN #47-5325912
- \* EllesEnchantedForest.Org
- \* \$1.5 Million Project



# *Elle's Enchanted Forest*

## PLAYGROUND FOR EVERYONE.

“Never ignore somebody with a disability as you don’t realize how much they can inspire you!”

### **Mission:**

Our mission is to have a playground for all children, children with disabilities, and parents/grandparents/Veterans that are disabled and need a place to be able to play with their kids / grandkids. There will also be a focus to include elements for children/adults with autism.

### **Where are we going:**

We plan to continue to raise funds to support Elle's Enchanted Forest and raise awareness/funds in other cities around the world.

### **Unconditional Love:**

Though Elle has introduced new challenges into our lives, she truly has been an inspiration to us and our family, and have given us a new profound sense of purpose. Children show us that there are no limits when it comes to play.



Elle's  
*Enchanted  
Forest*

PLAYGROUND  
FOR EVERYONE.

[www.ellesenchantedforest.org](http://www.ellesenchantedforest.org)



## Elle's Enchanted Forest Partnership Packet

### Add your touch to the Playground for Everyone

The *Playground for Everyone* project was launched in 2015. The goal of the project is to build a playground for all children, children with disabilities, and parents/grandparents/Veterans that are disabled and need a place to be able to play with their kids/grandkids.

Elle has been an inspiration to her family members, providing them with a new profound sense of purpose. Elle's parents have a total of three little girls and would like to see them grow and play together, but there are obvious limitations on how much they can interact due to the monitoring equipment, feeding tube, tracheostomy, etc. The Butlers believe that all children/adults with abilities and disabilities should have the same opportunities. The Playground for Everyone will be an inclusive and happy setting, and a place for families to find support from other families who may be going through similar experiences.

We have the full support from Rocky River Mayor Bobst and Chris Mehling, the Director of Rocky River Parks and Recreation to start this project. They have donated a space for the construction of the playground. The *Playground for Everyone* can be seen on YouTube under "Elle's Enchanted Forest".

In our attempt to raise the funds that the construction will require, we are reaching out to members of the Cleveland community to help our efforts. Aside from fundraising, we are also starting an awareness campaign. The team is looking forward to bringing together the community as we shed light on issues concerning children with disabilities as well as their families, and how these topics affect daily challenges. To do so, we will be attempting to break a **Guinness World Record** involving the world's largest finger painting on **May 13, 2016**. The event will take place on the grounds of the park.

The Elle's Enchanted Forest project is one that is both ambitious and exciting. It would be incredible to receive your support as we try to raise awareness about Elle's case and the funds to help hundreds of children like Elle in the Cleveland Area.

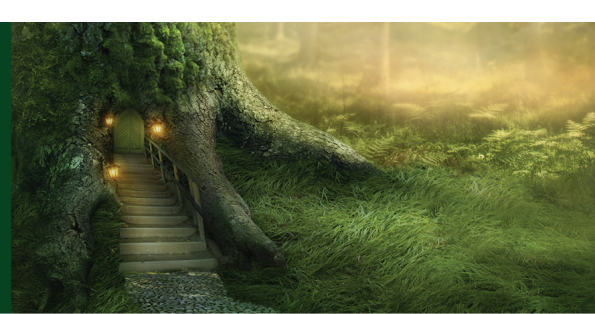
**contact:** Ann Butler 216.870.2061 | Bela Krizanovic 440.532.2456

**web:** [ellesenchantedforest.org](http://ellesenchantedforest.org) | **email:** [ellesenchantedforest@gmail.com](mailto:ellesenchantedforest@gmail.com) | **f** [facebook.com/PlaygroundForEveryone](https://facebook.com/PlaygroundForEveryone)



PLAYGROUND  
FOR EVERYONE.

[www.ellesenchantedforest.org](http://www.ellesenchantedforest.org)



## Playful Pal Partner

\$10,000

### Marketing/Promotional Assets

- Elle's Enchanted Forest Website
  - Logo with hyperlink to partner page
- Logo inclusion with the following:
  - Annual Report
  - Poster
  - Brochure
- Press Release Naming all Sponsors

### Event Weekend Exposure

- Logo inclusion with the following:
  - Official Elle's Enchanted Forest T-Shirts
  - Event Booklet
  - Painting Area Banners

### Permanent Mark

- Plaque within the park listing all donors

## Helping Hero Partner

\$50,000

### Marketing/Promotional Assets

- Elle's Enchanted Forest Website
  - Logo with hyperlink to partner page
- Logo inclusion with the following:
  - Digital Ads
  - Print Ads
  - Email Template
  - Annual Report
  - Poster
  - Brochure
- Press Release Naming all Sponsors

### Event Weekend Exposure

- Booth Space
- Logo inclusion with the following:
  - Official Elle's Enchanted Forest T-Shirts
  - Event Booklet
  - Painting Area Banners

### Permanent Mark

- Plaque within the park listing all donors

## Blissful Believer Partner

\$75,000

### Marketing/Promotional Assets

- Elle's Enchanted Forest Website
  - Logo with hyperlink to partner page
- Logo inclusion with the following:
  - Digital Ads
  - Print Ads
  - Email Template
  - Annual Report
  - Poster
  - Brochure
- Press Release Naming all Sponsors

### Event Weekend Exposure

- Booth Space
- Logo inclusion with the following:
  - Official Elle's Enchanted Forest T-Shirts
  - Event Booklet
  - Painting Area Banners
  - Main Stage

### Permanent Mark

- Plaque within the park listing all donors
- One piece of equipment dedicated to organization

contact: Ann Butler 216.870.2061 | Bela Krizanovic 440.532.2456

web: [ellesenchantedforest.org](http://ellesenchantedforest.org) | email: [ellesenchantedforest@gmail.com](mailto:ellesenchantedforest@gmail.com) | [facebook.com/PlaygroundForEveryone](https://www.facebook.com/PlaygroundForEveryone)



PLAYGROUND  
FOR EVERYONE.

[www.ellesenchantedforest.org](http://www.ellesenchantedforest.org)



## Shooting Star

\$100,000

### Marketing/Promotional Assets

- Elle's Enchanted Forest Website
  - Logo with hyperlink to partner page
- Logo inclusion with the following:
  - Digital Ads
  - Print Ads
  - Email Template
  - Annual Report
  - Poster
  - Brochure
- Press Release Naming all Sponsors

### Event Weekend Exposure

- Booth Space
- Logo inclusion with the following:
  - Official Elle's Enchanted Forest T-Shirts
  - Event Booklet
  - Painting Area Banners
  - Main Stage
- Last touch carried out by member of the organization during the closing ceremony with the Guinness Records official present

### Permanent Mark

- Plaque within the park listing all donors
- Guinness World Record Inclusion in award
- Two pieces of equipment dedicated to organization

## Forever After Partner

\$250,000

### Marketing/Promotional Assets

- Elle's Enchanted Forest Website
  - Logo with hyperlink to partner page
- Logo inclusion with the following:
  - Digital Ads
  - Print Ads
  - Email Template
  - Annual Report
  - Poster
  - Brochure
- Press Release Naming all Sponsors
- Press Release Naming 500k & 250k

### Event Weekend Exposure

- Booth Space
- Logo inclusion with the following:
  - Official Elle's Enchanted Forest T-Shirts
  - Event Booklet
  - Painting Area Banners
  - Main Stage
- Last touch carried out by member of the organization during the closing ceremony with the Guinness Records official present

### Permanent Mark

- Plaque within the park listing all donors
- Guinness World Record Inclusion in award
- Founding partners life size tree engraved with company name and logo at the entrance
- Three benches dedicated to the organization

contact: Ann Butler 216.870.2061 | Bela Krizanovic 440.532.2456

web: [ellesenchantedforest.org](http://ellesenchantedforest.org) | email: [ellesenchantedforest@gmail.com](mailto:ellesenchantedforest@gmail.com) | [facebook.com/PlaygroundForEveryone](https://www.facebook.com/PlaygroundForEveryone)



PLAYGROUND  
FOR EVERYONE.

[www.ellesenchantedenchantedforest.org](http://www.ellesenchantedenchantedforest.org)



**Enchanted Founding Partner**

**\$500,000**

### **Marketing/Promotional Assets**

- Elle's Enchanted Forest Website
  - Logo with hyperlink to partner page
- Logo inclusion with the following:
  - Digital Ads
  - Print Ads
  - Email Template
  - Annual Report
  - Poster
  - Brochure
- Press Release Naming all Sponsors
- Press Release Naming 500k & 250k

### **Event Weekend Exposure**

- Booth Space
- Logo inclusion with the following:
  - Official Elle's Enchanted Forest T-Shirts
  - Event Booklet
  - Painting Area Banners
  - Main Stage
- Last touch carried out by member of the organization during the closing ceremony with the Guinness Records official present
- Speaking opportunity during closing ceremony

### **Permanent Mark**

- Plaque within the park listing all donors
- Guinness World Record Inclusion in award
- Founding partners life size tree engraved with company name and logo at the entrance
- Uniquely designed area of the park with company name and logo

**contact:** Ann Butler 216.870.2061 | Bela Krizanovic 440.532.2456

**web:** [ellesenchantedenchantedforest.org](http://ellesenchantedenchantedforest.org) | **email:** [ellesenchantedenchantedforest@gmail.com](mailto:ellesenchantedenchantedforest@gmail.com) | **f** [facebook.com/PlaygroundForEveryone](https://facebook.com/PlaygroundForEveryone)



Elle's  
*Enchanted  
Forest*

PLAYGROUND  
FOR EVERYONE.

[www.ellesenchantedforest.org](http://www.ellesenchantedforest.org)



## Elle's Enchanted Forest - *Playground for Everyone*



## The Entrance: Trees with Logos

